



**Boomerang Consultancy**  
Implementing International Standards Into Businesses

**Environmental Policy**

Environmental Management System

**EP01**

# ***Environmental Management Policy***


**Boomerang Consultancy Limited**

**Document Reference: BCL\_Enviro\_02**

**Version No: 2.0**

**Issue Date: July 2017**

**Document Author and Owner: Paul E Tute**

 <b>Boomerang Consultancy</b> Implementing International Standards Into Businesses	<b>Environmental Policy</b>
Environmental Management System	<b>EP01</b>

## **MANAGEMENT RESPONSIBILITIES**

### **Introduction**

Alongside each of the organisational positions given in the management structure for the implementation of the Environmental management policy, individual management responsibilities are allocated that are deemed the most important to be undertaken by the persons concerned for which they are held accountable. These are outlined below:

### **Key Responsibilities**

To ensure we fulfil the objectives outlined in the Environmental Policy, the management structure indicates all who have responsibilities for Environmental management and are held accountable for what happens in their areas of control.

### **Board of Directors**


Overall responsibility for Environmental management rests with the Directors. The Managing Director will act as the contact point for the board on all Environmental management matters in the position of Environmental Management Appointee and will offer full support on all Environmental management matters to all of the other Environmental management roles.

Under their guidance, effective accident pollution and environmental training programmes are to be developed and procedures introduced to create environmental improvements within the company. They also ensure that as appropriate, management are trained in these policies and play their part in promoting Environmental management. All new employees will be trained in the company Environmental management requirements.

#### ***1.1 Environmental Management Appointee***

The Managing Director as Environmental Management Appointee is responsible for the following:

- To ensure that an Environmental management policy is developed and brought to the attention of all employees.
- To ensure that regular monitoring is carried out to establish a high level of environmental performance.
- To ensure that effective communication is established within the organisation
- To ensure that the Environmental management activities within the organisation is planned and programmed.
- To ensure adequate funding is available to deal with Environmental management matters
- To implement the Environmental management system and procedures along with ensuring adequate training, information and supervision.

 <b>Boomerang Consultancy</b> Implementing International Standards Into Businesses	<b>Environmental Policy</b>
Environmental Management System	<b>EP01</b>

**ORGANISATION**

**ORGANISATION CHART**

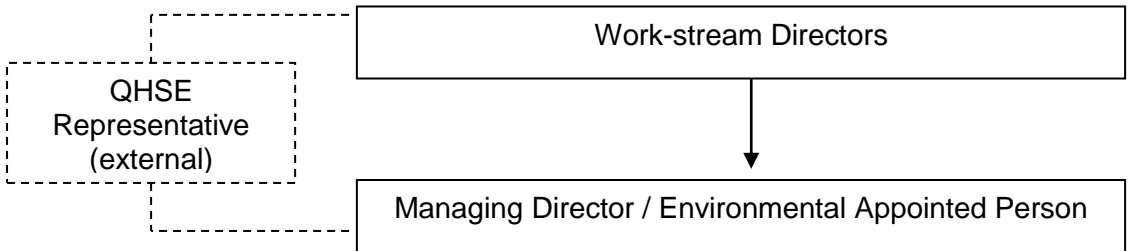
**Introduction**


The Directors of Boomerang Consultancy Ltd have overall responsibility for environmental management within the organisation. Boomerang Consultancy Ltd has appointed a designated Management Appointee (Managing Director) to have day-to-day responsibility for overseeing, implementing and monitoring the policy.

The Directors of Boomerang Consultancy Ltd have also employed an independent consultant in an advisory role in relation to Environmental management within the company.

The following personnel have been delegated as Environmental management representatives in Boomerang Consultancy Ltd:

**Environmental Management Structure**



 <b>Boomerang Consultancy</b> <small>Implementing International Standards Into Businesses</small>	<b>Environmental Policy</b>
Environmental Management System	<b>EP01</b>

The management and all who work at Boomerang Consultancy Ltd are committed to the care of the environment and the prevention of pollution.

The organisation ensures that all its activities are carried out in conformance with the relevant legislation and other requirements

Boomerang Consultancy Ltd seeks to minimise waste arising, promote recycling, reduce energy consumption and emissions and where possible, to work with suppliers, contractors and those working on behalf of the organisation who have sound environmental policies.

An essential feature of the environmental management system is a commitment to improving environmental performance. This is achieved by setting annual environmental improvement objectives and targets which are regularly monitored and reviewed. These objectives and targets are publicised throughout Boomerang Consultancy Ltd and all staff are committed to their achievement.

In order to ensure the achievement of the above commitments, Boomerang Consultancy Ltd has implemented an environmental management system which satisfies the requirements of ISO14001:2015.

This policy and the obligations and responsibilities required by the environmental management system have been communicated to all employees. The policy is available to the public on request.

Mr. Paul Tute  
Managing Director  
10<sup>th</sup> July 2017